

Rokeby Primary School



Newsletter



2 3 . 0 9 . 2 0 2 0

We kindly ask that you wear a mask when visiting the school office from now on. Thank You.

We have been very lucky to enjoy some beautifully sunny weather this week and the children have made the most of being able to get out and about. The children are now quite settled into their new routines and have surprised us with how resilient they have been. Please keep an eye out for an updated menu in the next few weeks as the weather starts to get a little cooler.

As always, please speak to your class teacher if you need anything throughout the week.

Mrs James

SOME PE DAYS HAVE CHANGED. PLEASE SEE BELOW.

PE Kit

To minimise movement around school, on your child's PE day, **we ask that they attend school in their PE kit.** They may also wear their school jumper with their PE kit if they wish.

Your child will be doing PE on the following day:

Nursery: Wednesday Year Three: Thursday

Reception: Wednesday Year Four: Thursday

Year One: Wednesday Year Five: Friday

Year Two: Friday Year Six: Friday



MACMILLAN CANCER SUPPORT

At Rokeby we have been hosting a MacMillan cake morning for many years, every year we have had a phenomenal turn out and raised an extraordinary amount towards MacMillan Cancer Support. This year the morning will run differently due to COVID-19. Due to the current situation we are unable to have parents in school

On **Friday 25th September** every child in their own classroom will be able to donate some money to buy a cake for their morning snack. We would like to ask that the minimum donation is 50p.

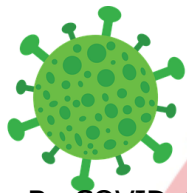
Please send the correct change so we can minimise the handling of cash.

Student Absences.

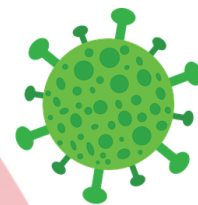
If your child is off school you **MUST** notify the office every morning of their absence before 9:15 by either calling us on **01788 814399** or emailing **rokebyprimary@stowevalley.com**.

You also have to make us aware of any appointments that will conflict with school times by calling or emailing. Please provide us with evidence of the appointment i.e. hospital letter or appointment cards/emails. (We will take copies of these for our records).

PART OF STOWE VALLEY MULTI ACADEMY TRUST



COVID-19



Be COVID-19 Safe

To help keep your child and fellow student's safe, your child should not come to school if:

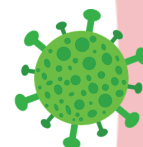
- They are feeling unwell or are experiencing any coronavirus symptoms (If in doubt, book a test. If positive, isolate for 10 days from start of symptoms)
- They have tested positive for coronavirus and are within the 10 day isolation period
- They are sharing a household or support bubble with someone with symptoms (person with symptoms to be tested, if negative can return to usual activities; if positive, you must isolate for 14 days from last contact)
- They have been advised by the NHS test and trace service to self-isolate or aware they are a close contact of someone who has tested positive for coronavirus (isolate for 14 days from last contact)
- They have returned from abroad and government guidance states they need to quarantine for 14 days



COVID-19 Rokeby Primary Contact line:

0 7 3 8 8 0 5 5 3 9 6

TEXT ANY DETAILS, AS SOON AS YOU FIND OUT, ANYTIME.



What have we been up to?

Following on from their learning of 'The Snail and the Whale', Year 1 have been testing out different materials to see what would make the best boat!



The Nursery team is so proud of how well the children are choosing different activities to help them to learn through play. We have so many play options for the children to explore and develop their physical skills outdoors using the bikes, cars and large wooden play equipment. They have been exploring early drawing and writing skills using chalks, pens and paint dabbers. For days when the weather doesn't always allow us to play outside, we have plenty of fun things to do inside. They have been enjoying looking at books in the book corner and talking about favourite stories and have been using their problem-solving skills when doing puzzles. They have also been playing at the water tray and have been using their imagination to tell stories when playing with the construction vehicles.



Safe Secrets/Interactive Task.

Through our Protective Behaviours programme, the children have been exploring the idea of safe and unsafe secrets. Rokeby children know that a safe secret or surprise is one that you only keep for a short time and is usually to do with surprising someone. For example, a surprise party or making a special Christmas card for a friend or family member- safe secrets are not kept for long and it is ok to tell an adult about them.

Whereas, unsafe secrets make our Early Warning Signs go on high alert, such as a racing heart or butterflies in your tummy. Rokeby children know that if someone asks you to keep a secret and not tell anyone or not to tell trusted adults then it is not ok and is not a safe secret to keep.

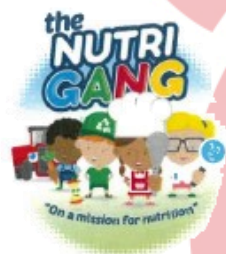
To further support the work we have been doing on this, please use the task below as discussion points and to further develop their understanding on safe secrets.



Tick whichever box you think applies to the secret. See the back of the newsletter for the answers.



Secret	SAFE	UNSAFE
Making a birthday cake for Gran.		
Talking to someone you do not know on the internet.		
Being mean to someone. Calling them unkind words and choosing not to show the Rokeby Key Qualities.		
Making a card for a special friend.		
Playing games or watching programs that are above PG.		
A surprise party.		



Educaterers/School Meals

Claim your free school meal today.



To find out if you are eligible go to
www.warwickshire.gov.uk/education-learning/apply-free-school-meals#
or

For the Menu and other information please visit
www.educaterers.co.uk

UNIVERSAL INFANT FREE SCHOOL MEAL

Don't forget if you have a child
in Reception, Year 1 or Year 2
they are entitled to a
free school lunch everyday too.

Save over £400 a year and hours of
time making a packed lunch. Your
child will receive a tasty nutritious
meal every day. A guarantee that
fresh, seasonal food is always on our
menu.



Heat4Health

Heat4Health is a new project team, within Act on Energy, a charity who, for many years, have been delivering energy efficiency support on behalf of Worcestershire, Warwickshire, Solihull and Coventry local authorities. To see if you qualify or to get your **FREE** home energy check, FREEPHONE 0800 988 2991 or visit their WEBSITE www.actonenergy.org.uk

Barnardo's 'See, Hear, Respond' service

See, Hear, Respond, provides support to children, young people and their families who aren't currently seeing a social worker or other agency, and who are struggling to cope with the emotional impacts of coronavirus (COVID-19). See, Hear, Respond will support from pre-birth up to 18 years of age and those with special educational needs under the age of 25. It's really easy to put in a referral into See Hear Respond. You can call **0800 157 7015** (9am to 9pm Monday to Friday, 10am – 6pm at weekends) or go to www.barnardos.org.uk/see-hear-respond to complete a simple referral form.

I M P O R T A N T D A T E S

DATE	EVENT	INFORMATION
25/09/2020	MacMillan Coffee/Cake Morning	Minimum 50p donation. For children in school only. Please see newsletter extract for more information
12/10/2020 & 13/10/2020	Parents Evenings	Parents evenings. Due to COVID-19 these will be via a video call service.
14/10/2020	PTA AGM	7.00pm. All welcome. This years AGM will be held virtually due to COVID-19.
23/10/2020	Teacher Training	School closed to students for teacher training.
26/10/2020-30/10/2020	October Half Term	School closed
18/12/2020	Last Day of Term	Last day of school term before Christmas Break.
04/01/2021 & 05/01/2021	Teacher Training	School closed to students for teacher training.
06/01/2021	Start of Term	All students to return to school.

Support For You

Please remember that we are here for all of our families. Please do not feel alone. If we can support you in any way then please contact us on Class Dojo or you can email:

RokebyFamilySupport@stowevalley.com



Answers for our Safe Secret Task.

1) Safe

2) Unsafe

3) Unsafe

4) Safe

5) Unsafe

6) Safe

Rokeby Primary is part of the Stowe Valley Multi Academy Trust.
Tel: 01788 814399 Email: rokebyprimary@stowevalley.com



Rokeby Primary School is committed to safeguarding and promoting the welfare of children and young people and expects

everyone to share this commitment.